

SNAKE SAFETY

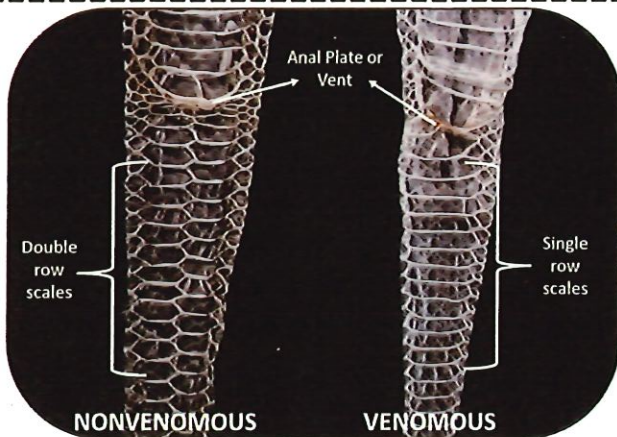


- Wear appropriate attire, watch where you step, and do not harass, capture, or attempt to kill snakes.
- If you see a snake, maintain a safe distance (> 6 feet) – most snake bites occur when people try to capture or kill snakes.
- If you are walking in long grass or thick brush, wear heavy boots and/or snake leggings.
- ALWAYS watch where you step and place your hands; at night always use a flashlight.
- NEVER pick up a snake unless you are positive it is a harmless species.

IN CASE OF A SNAKEBITE



- Keep the victim calm & reassured.
- Remove all jewelry and restrictive clothing from affected area.
- Contact local emergency services for transport to a local hospital emergency room.
- Reduce physical exertion by the victim.
- DO NOT cut or ice the affected area or use constricting bands or tourniquets.
- Take note of the snake's size and appearance (pattern) or take a cellphone photo, but DO NOT TRY TO CAPTURE OR KILL THE SNAKE.



SNAKE SHED SKIN TAILS TELL TALE

- Overlapping scales underneath the tail are from NONVENOMOUS snakes (except for the coral snake).
- VENOMOUS pit vipers (rattlers, copperheads and cottonmouths) have a single row of scales under their tails.

<http://srelherp.uga.edu>

VENOMOUS SNAKES OF GEORGIA & SOUTH CAROLINA

COTTONMOUTH / WATER MOCCASIN



- Semi-aquatic
- Varied diet
- Gets name from threatening open-mouth display

COPPERHEAD



- Most common venomous snake
- Varied diet
- Juveniles have a yellow-tipped tail used as a lure

PIGMY RATTLESNAKE



- Seldom more than 2 feet long with tiny rattle
- Varied diet

CANEBRAKE / TIMBER RATTLESNAKE



- Largest rattlesnake in our area (CSRA)
- Ambush predator, diet of mostly small mammals

EASTERN DIAMONDBACK RATTLESNAKE



- NOT found in CSRA
- Found in the Lower Coastal Plain
- Largest venomous snake in US
- Ambush predator

EASTERN CORAL SNAKE



- Red bands touch yellow bands
- Secretive, fossorial
- Prey on other snakes and lizards



Savannah River
Ecology Laboratory
UNIVERSITY OF GEORGIA



@UGASREL